

IPmux-16L

Hub-Site Pseudowire Access Gateway



Legacy over PSN
solution for
transmitting E1
streams over packet
switched networks

TDM IP
Driven®

- Comprehensive compliance with pseudowire/circuit emulation standards including TDMoIP, CESoPSN, SAToP and HDLCoPSN
- Built on TDMoIP technology, implementing IETF, MFA Forum, ITU-T for Pseudowire Emulation Edge-to-Edge (PWE3)
- E1 emulation over MPLS, IP and Ethernet networks
- Framed (full or fractional) and unframed E1 traffic
- Three Gigabit, three Fast Ethernet and 8/16 TDM service ports

IPmux®-16L is a TDM pseudowire access gateway, extending TDM-based services over packet switched networks. It also serves as an Ethernet-based access device.

These packets are transmitted via the IPmux-16L Ethernet network port to the PSN. A remote pseudowire device converts the packets back to TDM traffic.

PSEUDOWIRE PERFORMANCE

The unit provides a legacy over PSN solution by transmitting E1 streams over packet switched networks (PSNs). The device converts the data stream from its user E1 ports into packets for transmission over the network. The addressing scheme of these packets is IP, MPLS or MEF-8.

RAD

data communications

The Access Company

IPmux-16L

Hub-Site Pseudowire Access Gateway

Preserves investment
in legacy equipment
when migrating to
PSN

The hardware-based processing provides a robust and high performance pseudowire solution with minimal latency

The unit supports various legacy over packet transport types, including TDMoIP, CEsPSN, SAToP and HDLCoPSN.

High-performance hardware-powered buffering and forwarding techniques achieve minimal end-to-end processing delay. Configurable packet size balances PSN throughput and delay while a jitter buffer compensates for packet delay variation (jitter) of up to 200 msec in the network.

An assigned IANA-registered UDP port number for pseudowire simplifies flow classification through switches and routers.

PSEUDOWIRE TIMING

Synchronization between TDM devices is maintained by deploying advanced clock distribution mechanisms. The clocking options are:

- Internal – The IPmux-16L internal clock oscillator provides the master clock source for the TDM circuit
- Loopback – The transmit clock is derived from the TDM port receive clock
- Adaptive – The clock is recovered from the PSN.

The system clock ensures a single clock source for all TDM links and uses master and fallback timing sources for clock redundancy. The system also supports different clock sources from different TDM links at the same time.

Clock recovery conforms to G.823 and G.824 traffic interface, using G.8261 defined scenarios. Advanced clock recovery conforms to G.823 synchronization interface using G.8261-defined scenarios and achieves 16 ppb clock accuracy.

QoS

IPmux-16L performs VLAN tagging and priority labeling according to 802.1p&Q. Pseudowire packets could be assigned a dedicated VLAN ID and 802.1p bit.

The ToS or Diffserv of the outgoing pseudowire packets are user-configurable. This allows assigning pseudowire packets a higher priority in IP networks.

EXP bits are used for QoS marking of the TDMoMPLS traffic in MPLS networks.

TDM INTERFACE

8 or 16 E1 ports provide connectivity to any standard E1 device.

E1 interfaces feature:

- Integral LTU for long haul applications
- G.703 unframed and G.704 framed modes
- CAS and CRC-4 bit generation (E1).

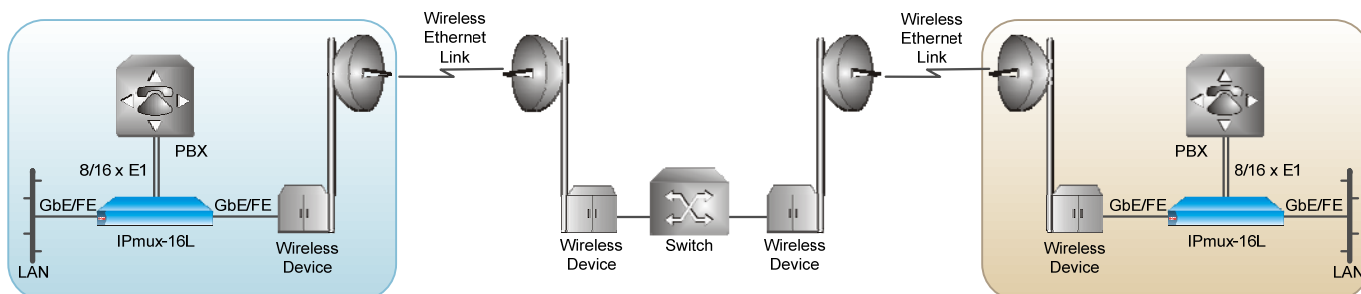


Figure 1. LAN and TDM Services over Wireless Link

ETHERNET INTERFACE

IPmux-16L includes the following Ethernet ports:

- Three Gigabit Ethernet ports (SFP or UTP)
- Three Fast Ethernet ports (SFP or UTP).

All ports can be used for network or user connection. They support autonegotiation, VLAN tagging and rate limiting.

ETHERNET CAPABILITIES

IPmux-16L features an internal bridge, operating in VLAN-aware and VLAN-unaware modes, supporting up to 4k VLANs.

Each Ethernet port features:

- Rate limiting for bandwidth control
- Four priority queues (strict or weighted) for handling traffic with different service demands. Traffic is classified according to IP Precedence, 802.1p, DSCP or port default priority.
- VLAN membership for ingress traffic restriction
- VLAN tagging
- Double VLAN tagging (VLAN stacking)
- Bridging and filtering.

The device supports standard IP features, such as ICMP (ping), ARP, next hop and default gateway.

Ingress and egress rate can be limited per user and network port. Rate limitation can be configured per packet type as well.

ETHERNET RING

The unit employs an automatic protection switching protocol (G.8032) to construct a self-healing Ethernet fiber ring topology. In case of link failure on any segment of the ring, the Ethernet traffic is rerouted within 50 ms.

MANAGEMENT

IPmux-16L can be configured and monitored locally via an ASCII terminal, or remotely via Telnet or Web browser.

Management traffic can run over a dedicated VLAN.

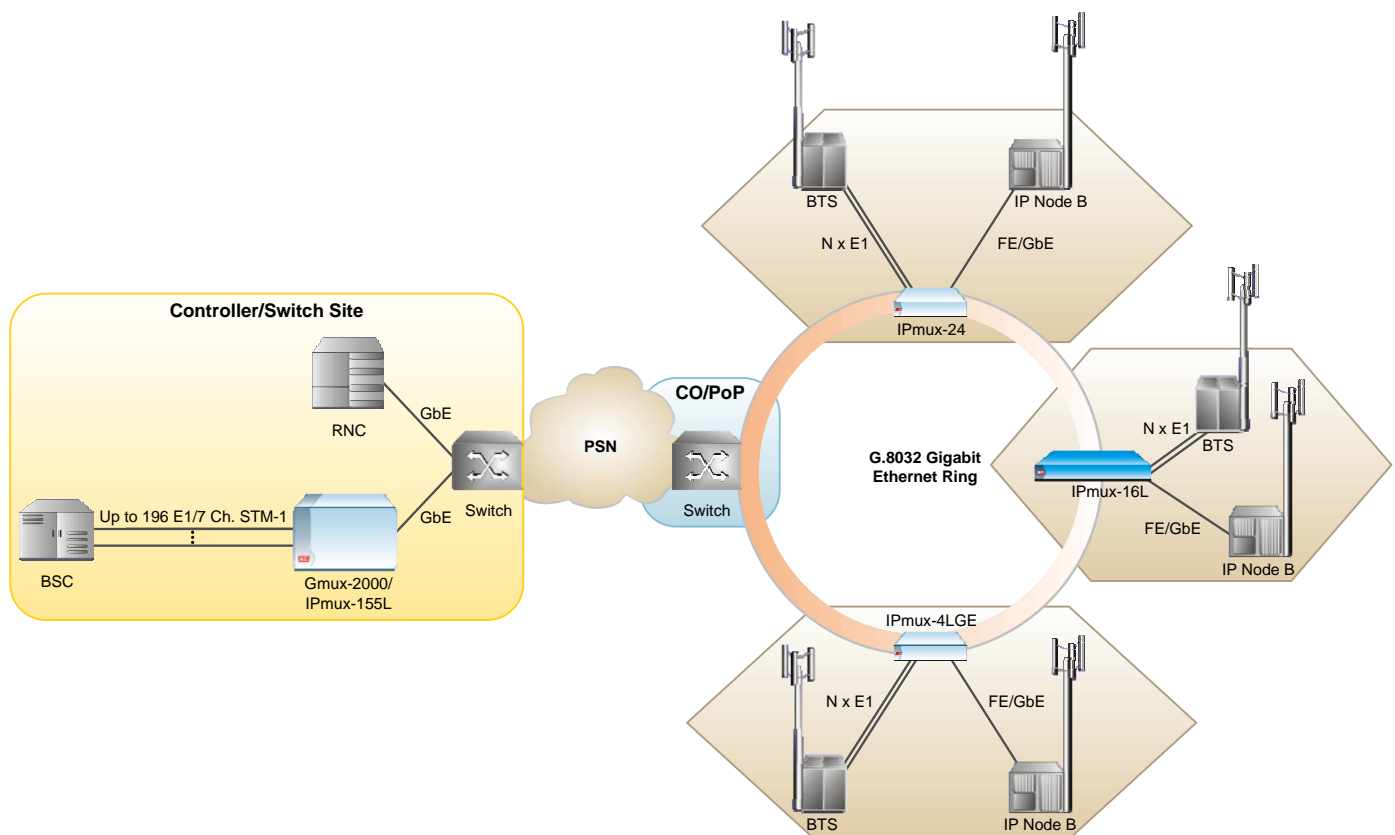


Figure 2. 2G/3G Mobile Backhaul over a Protected Fiber Ring

IPmux-16L

Hub-Site Pseudowire Access Gateway

Lowers Opex of TDM service by utilizing packet infrastructure

Software can be downloaded via a local terminal using XMODEM/YMODEM, or remotely, using TFTP. After downloading a new software version, IPmux-16L automatically saves the previous version in non-volatile memory for backup purposes. Also, copies of the configuration file may be downloaded and uploaded to a remote workstation for backup and restore purposes.

DIAGNOSTICS

External and internal loopbacks check TDM link connectivity.

A built-in internal and external BERT utility is used to monitor the TDM link quality.

The following E1 physical layer performance statistics are available: LOS, LOF, LCV, RAI, AIS, FEBE, BES, DM, ES, SES, UAS and LOMF.

LAN and IP layer network condition statistics, such as packet loss and packet delay variation (jitter), are monitored and stored by the device.

Fault isolation, statistics and event logging are also available.

RAD's TDM PW OAM verifies connectivity and prevents pseudowire configuration mismatch.

Specifications

E1 INTERFACE

Number of Ports

8 or 16

Compliance

ITU-T Rec. G.703, G.704, G.706, G.732, G.823

Data Rate

2.048 Mbps

Line Code

HDB3, AMI

Framing

Unframed, framed, multiframe; with or without CRC-4

Signaling

CAS, CCS (transparent)

Line Impedance

120Ω, balanced

Signal Levels

Receive:

0 to -36 dB with LTU (long haul)

0 to -10 dB without LTU (short haul)

Transmit balanced: ±3V ±10%

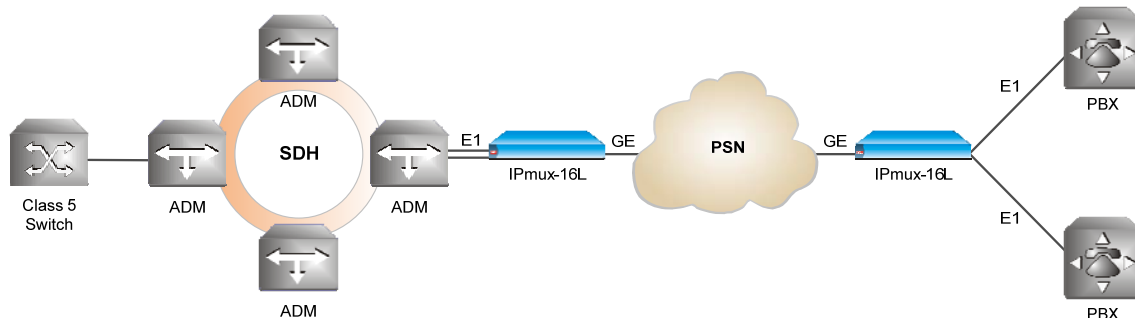


Figure 2. TDM Backhaul and Trunking over a PSN

Jitter and Wander Performance

Per ITU-T G.823

Connector

RJ-45, balanced

ETHERNET INTERFACE

Number of Ports

6 (network or user)

Port Combination

3 GbE (SFP or UTP) + 3 FE (SFP or UTP)

Type

Electrical: 10/100/1000BaseT

Fiber optic (SFP-based): 1000Base-SX, 1000Base-LX, 1000Base-Bx, 100Base-FX

Note: It is strongly recommended to order this device with original RAD SFPs installed. This will ensure that prior to shipping, RAD has performed comprehensive functional quality tests on the entire assembled unit, including the SFP devices.

RAD cannot guarantee full compliance to product specifications for units using non-RAD SFPs.

For detailed specifications of the SFP transceivers, see the SFP Transceivers data sheet at www.rad.com.

MAC Table Size

8K

Frame Size

Up to 1632 bytes

PSEUDOWIRE CONNECTIONS

Compliance

IETF: RFC 4553 (SAToP), RFC 5087 (TDMoIP) and RFC 5086 (CESoPSN)

ITU-T: Y.1413

MFA: IA 4.1, IA 8.0.0

Number of PW Connections

256 (up to 16 PWs per E1)

Jitter Buffer Size

0.5–200 msec with 0.1 msec granularity (SAToP)

1.5–200 msec with 0.5 msec granularity (TDMoIP, CESoPSN)

Adaptive Clock

Frequency accuracy: ±16 ppb or ±100 ppb and G.823 synchronization interface requirements (clause 6), when locked to a PRC (stratum 1) or SSU (stratum 2) clock

Frequency accuracy in holdover: ±16 ppb ± 1 ppb of aging per day

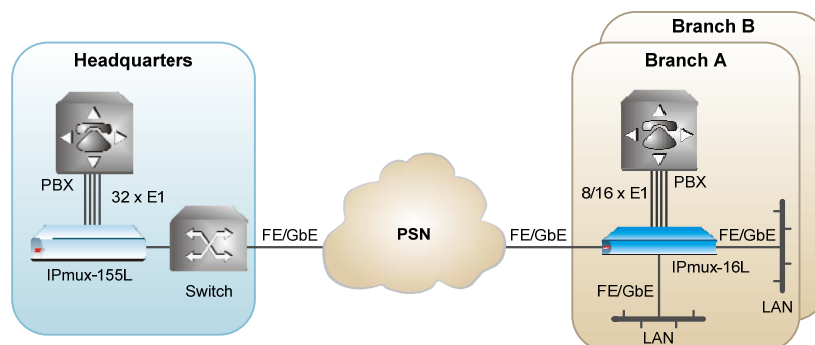


Figure 4. Corporate Multisite Communication over a PSN

IPmux-16L

Hub-Site Pseudowire Access Gateway

Carrier-grade voice
quality without
compression, or
silence suppression

GENERAL

E1 Timing

Internal
System
Loopback
Adaptive

System Timing

E1 loopback/ACR
E1 adaptive clock recovery
Internal

Adaptive Clock Characteristics

According to G.823 traffic interface

Management

SNMPv1v2c
Telnet
ASCII terminal via V.24 (RS-232) DCE port
Web browser

Diagnostics

Loopbacks: E1 port local/remote
BERT: E1 port internal/external
VCT: Ethernet Virtual Cable Test

Statistics

E1 (per G.826 and RFC 2495)
Ethernet (per RFC 2819)
Jitter buffer indication (overflow,
underflow, sequence error, max/min jitter
buffer levels)

Alarm Relay

Via dedicated DB-9 female connector

Indicators

PWR (green) – Power status
TST (yellow) – Test status
ALM (red) – Alarm status
LOC/REM (red/red) – E1 local/remote
sync loss
LINK/ACT (green/yellow) – Ethernet
link/activity status on RJ-45 or SFP

Power

AC: 100–240 VAC
DC: -48 VDC (-40 to -60 VDC)

Power Consumption

21W max







Physical

Height: 43 mm (1.7 in)
Width: 440 mm (17.5 in)
Depth: 240 mm (9.4 in)
Weight: 3.6 kg (7.9 lb)

Environment

Temperature: 0° to 50°C (32° to 122°F)
Humidity: Up to 90%, non-condensing

Table 1. IPmux Family Product Comparison

Feature	IPmux-2L (Ver. 2.0)	IPmux-4L (Ver. 1.0)	IPmux-4LGE (Ver. 2.0)	IPmux-16L (Ver. 1.0)	IPmux-24 (Ver. 3.5)	IPmux-216 (Ver. 3.5)
						
TDM service ports	1, 2 × E1	2, 4 × E1	4 × E1	8, 16 × E1	1, 2, 4 × E1/T1	8, 16 × E1/T1
Ethernet network ports	1 × FE	1 × FE	1 × GbE network, 2 × GbE network/user	3 × GbE network/user 3 × FE network/user	1 × GbE/FE network, 1 × GbE/FE network/user	1 × GbE/FE network 1 × GbE/FE network/user
Ethernet subscriber ports	2 × FE	2 × FE	4 × FE		1 × GbE/FE	1 × GbE/FE
Number of PWS	63	64	64	256	64	256
Multi-pseudowire	✓	✓	✓	✓	✓	✓
Advanced clock recovery	-	✓	✓	✓	✓	✓
Redundant power supply	-	-	-	-	-	✓
External clock port	-	-	-	-	Optional	✓
Serial data port	Optional	-	-	-	-	-
SSH, SSL, RADIUS	-	-	-	-	✓	✓
Network management system	RV-EMS	RV-EMS	RV-EMS	RV-EMS	RV-SC/TDMoIP, RV-EMS (basic shelf view)	RV-SC/TDMoIP, RV-EMS (basic shelf view)

IPmux-16L

Hub-Site Pseudowire Access Gateway

Ordering

STANDARD CONFIGURATIONS

IPMUX-16L/AC/16E1/3XGESFP/3FEUTP

IPMUX-16L/AC/16E1/3XGEUTP/3FEUTP

IPMUX-16L/AC/8E1/3XGESFP/3FEUTP

IPMUX-16L/AC/8E1/3XGEUTP/3FEUTP

SPECIAL CONFIGURATIONS

IPMUX-16L/!/~/\$/+1/+2

! Power supply:

AC 100 to 240 VAC

48 -48 VDC

~ Timing (Default=Standard clock recovery):

A Hardware support for accurate clock recovery over packet

\$ TDM interface:

8E1 8 balanced E1 interfaces

16E1 16 balanced E1 interfaces

+1 Ethernet network/user port:

3XGESFP 3 GbE SFP ports

3XGEUTP 3 GbE UTP ports

+2 Ethernet network/user port:

3XFESFP 3 Fast Ethernet SFP ports

3XFEUTP 3 10/100BaseT UTP ports

Note: It is strongly recommended to order this device with **original RAD SFPs installed**. This will ensure that prior to shipping, RAD has performed comprehensive functional quality tests on the entire assembled unit, including the SFP devices. RAD cannot guarantee full compliance to product specifications for units using non-RAD SFPs. For detailed specifications of the SFP transceivers, refer to the SFP Transceivers data sheet.

SUPPLIED ACCESSORIES

Power cord

DC power connection kit

RM-34

Hardware kit for mounting one IPmux-16L unit into a 19-inch rack

OPTIONAL ACCESSORIES

CBL-DB9F-DB9M-STR

Control cable

International Headquarters
24 Raoul Wallenberg Street
Tel Aviv 69719, Israel
Tel. 972-3-6458181
Fax 972-3-6498250, 6474436
E-mail market@rad.com



<http://www.cbnetworks.fr>

12 avenue des prés
78059 St Quentin en Yvelines

Tel: 33 (0)1 77 55 03 00

Fax: 33 (0)1 30 44 11 95

E-mail: sales@cbnetworks.fr



data communications

The Access Company