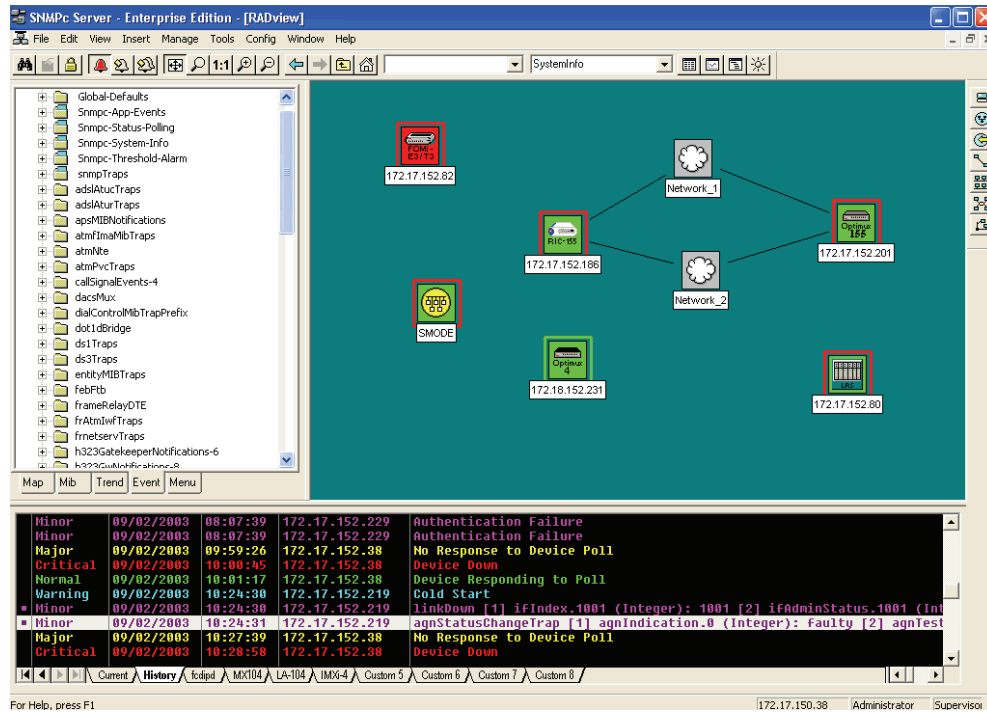


SNMPC

PC-based SNMP Platform



SNMP-based management system to monitor and proactively manage the entire network infrastructure

- Monitors and proactively manages small and large networks
- Verifies availability and reliability of critical network components
- Integrates with RADview-PC and RADview-EMS element management systems
- Supports SNMP V1, V2c, V3
- Automatically discovers devices and services

SNMPC is an SNMP-based management system that monitors and proactively manages the entire network infrastructure.

The system tailors views and capabilities to each management user.

Events are stored in a central log file. They can be forwarded to helpdesk or domain management systems via email or pager.

SNMPC monitors LAN/WAN performance and service availability. This enables effective planning of upgrades and reduces wasted bandwidth.



SNMPC

PC-based SNMP Platform

Standard and private information on hubs, routers, switches and other devices from any vendor can be viewed and modified after compilation of third-party MIBs.

SNMP V1, V2c, V3 are supported with SHA/MD5 authentication and DES encryption.

Automatic discovery and polling is provided for SNMP and ICMP (ping) devices.

Service discovery is provided on each device including: SNMP, ICMP, Telnet, FTP, HTTP, SMTP, and four user-specified TCP ports.

SNMPC is highly customizable with options to import private MIBs or to create custom tables, expressions and menus.

The following actions can be configured to be triggered automatically for each event: Ignore, Ignore Duplicates, Forward, Email, Page, Display Alarm Box, or Execute Application (see *Figure 1*).

Reports are provided in a graph or bar chart form. The reports, as well as distribution and summary information can be printed out or exported to a Web format.

SNMPC supports ODBC, text export and event forwarding using SNMP traps.

Note: RADview supports only the SNMPC workgroup edition.

Specifications

MINIMUM HARDWARE REQUIREMENTS

IBM-PC compatible computer based on a Pentium IV, 1.6 GHz, 256 MB RAM

Hard disk drive with 100 MB free disk space for installation

CD-ROM drive

17-inch color monitor, supporting 1024 × 768 resolution

MINIMUM SOFTWARE REQUIREMENTS

Microsoft Windows™ XP/2000/NT/ME/98

Ordering

SNMPC-SW/#

PC-based SNMP platform

SNMPC-SW/#/E

PC-based SNMP platform, upgrade or evaluation version

Legend

platform version:
VER7 Version 7

E installation type:
UPG upgrade of an existing application

DEMO 31-day, fully functional evaluation version

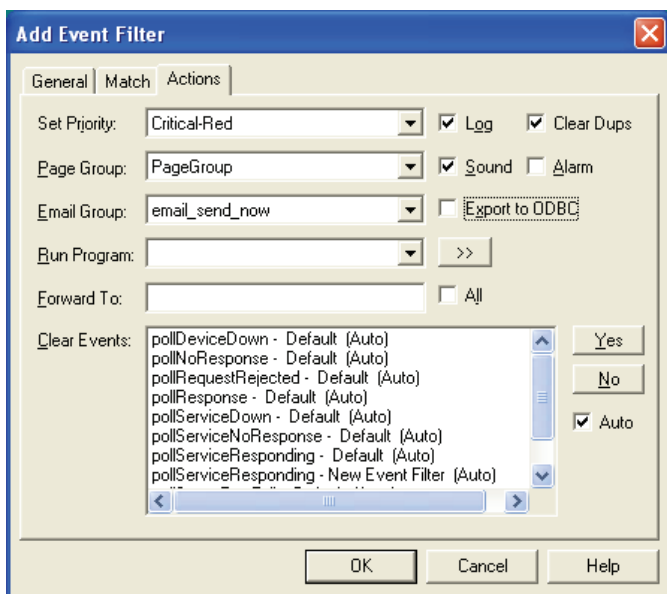


Figure 1. Automatic Action Configuration

International Headquarters
24 Raoul Wallenberg Street
Tel Aviv 69719, Israel
Tel. 972-3-6458181
Fax 972-3-6498250, 6474436
E-mail market@rad.com

CB NETWORKS
http://www.cbnetworks.fr

12 avenue des prés
78059 St Quentin en Yvelines
Tel: 33 (0)1 77 55 03 00
Fax: 33 (0)1 30 44 11 95
E-mail: sales@cbnetworks.fr



data communications
Innovative Access Solutions

www.rad.com