

DATA SHEET

BENEFITS

SINGLE PLATFORM FOR MANAGING Wi-Fi

Intuitive, easy to use solution for management, monitoring and reporting of Unleashed networks deployed across multiple sites from anywhere in the world.

SINGLE SIGN-ON

View and manage all your networks from the Unleashed Multi-Site Manager easily with the single sign-on.

CUSTOMIZABLE DASHBOARD

Provides near real-time snapshot of every AP and client present on the network along with the geo location of networks.

BACKUP AND RESTORE

Backup and restore enables to easily replicate the network at a different site with a cookie-cutter configuration.

PROACTIVE MONITORING

Create customized alerts to stay informed about ongoing events in the network.

EASILY UPGRADE ALL THE SITES

Upgrade Ruckus devices across all the sites together or individually with a click of the mouse.

DETAILED REPORTING

Detailed historical reports by device, client, connectivity trends, mesh changes for a specified time.

CONTROL THE ACCESS

Create role-based access to monitor and manage the network.

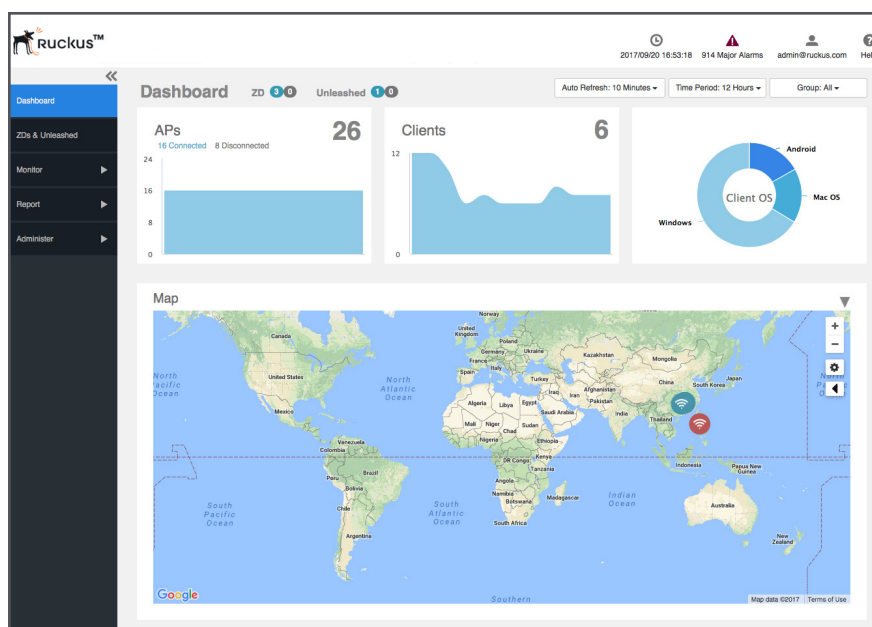
If you are an organization with multiple small locations, along with easy to deploy and high performing Wi-Fi that is affordable, you need a simple solution to manage your Wi-Fi. Unleashed Multi-Site Manager is a one-stop solution for management, monitoring and reporting of your Unleashed networks deployed across multiple locations.

Unleashed Multi-Site Manager is an intuitive, easy to use Linux based software for building and managing small business Wi-Fi networks across multiple sites. It enables owners of Unleashed networks to easily and securely monitor, manage and configure the network from anywhere in the world with a single sign-on.

Unleashed Multi-Site Manager provides a single pane of glass visibility and management of Unleashed networks. Unleashed Multi-Site Manager enables customers to perform remote monitoring, centralized management and detailed reporting of all Unleashed networks.

REMOTE MONITORING

- Understand the health status of Unleashed networks remotely from a centralized location.
- Dashboard provides a near real-time snapshot of every AP and client present on the network along with the geo location of networks on Google Maps.
- Drill down into AP-level monitoring or client-level monitoring to get detailed visual insights about all the vital statistics.
- Create customized alerts to stay informed about ongoing events in the network.







Customizable Dashboard

CENTRALIZED MANAGEMENT

- Easily manage any Unleashed network deployed across multiple-sites from a centralized location
- Backup information about a network to quickly bring up the network in case of any error
- Backup and restore enables to easily replicate the network at a different site with a cookie-cutter configuration
- Create role-based access to monitor and manage Unleashed networks
- Schedule upgrades across multiple sites with a click of button

DETAILED REPORTING

- Detailed historical reports by device, client, connectivity trends, mesh changes for a specified time in clearly understandable format
- Schedule and derive rich reports on RSSI, PCI, resource monitoring and SLA

Name	Member Count	Serial Number	Connection	Management IP	IP Address	Model
 Ruckus-Unleashed	24 0 1	un032160220547201	●	10.11.32.44	10.11.46.129:443	Unleashed
 Sunnyvale1	7 0 0	un043150360299801	●		172.18.126.12:443	Unleashed
 Sunnyvale2	1 0 6	un43160450742915C	●		172.18.42.110:443	Unleashed
 Ruckus-Unleashed	22 0 3	un24170200312315C	●		10.112.0.10:443	Unleashed

Snapshot of all the networks

FEATURES

- Customized Dashboard View settings
- Auto discovery of Ruckus devices
- Trending reports and customized graphs such as bandwidth utilization per application or per user, AP airtime utilization and the APs with the most associated clients.
- Service level agreement graphs and reports that include percentage uptime for AP groups and specific clients, backhaul uptime and client potential throughput.
- Group configuration of devices
- Manual or scheduled firmware upgrades for selected devices
- Geographic representation of devices on the networks using Google maps
- Multi-tiered management access
- Secure access with remote SSL
- Client throughput data such as connectivity throughput, connectivity status, signal quality, etc.
- Insert the connection and association reports
- Audits of user actions and system logs

MINIMUM SYSTEM REQUIREMENTS

CPU	• 2.5 GHz
Memory	• 8 GB
Hardware	• 160 GB
O/S	• Red Hat Linux Enterprise Edition 5.0 or higher

Recent Events			
Severity: <input type="radio"/> Show All <input type="radio"/> Medium and High <input checked="" type="radio"/> High Only			
Data/Time	Event Type	Device Name	Activity
09/20 16:45:52	AP channel change	jimmy_FM-master	AP[RuckusAP R500@d4:68:4d:25:95:70] detects interference on radio [11 a/n/ac] and switches from channel [64] to cha...
09/20 16:45:52	AP channel change	jimmy_FM-master	AP[RuckusAP R510@ec:8c:a2:1f:af:d0] detects interference on radio [11g/n] and switches from channel [4] to channel [8].
09/20 16:45:32	AP channel change	corporate-network1	AP[R710-Tibet Conf@94:f6:65:14:cc:e0] detects interference on radio [11g/n] and switches from channel [11] to channel...
09/20 16:45:32	AP channel change	corporate-network1	AP[H320-Chongqing Dog Conf@24:79:2a:14:d9:c0] detects interference on radio [11g/n] and switches from channel [4] ...
09/20 16:45:32	AP channel change	corporate-network1	AP[R720-Elaine-Cub@0c:f4:d5:13:38:10] detects interference on radio [11g/n] and switches from channel [4] to channel...
09/20 16:45:32	AP channel change	corporate-network1	AP[Sam-C110-Desktop@f0:3e:90:3f:83:c0] detects interference on radio [11g/n] and switches from channel [4] to chann...
09/20 16:45:32	AP channel change	corporate-network1	AP[R510-Tibet Conf@f0:3e:90:07:91:20] detects interference on radio [11g/n] and switches from channel [4] to channel ...
09/20 16:38:15	Rogue AP detected	jimmy_FM-master	A new rogue[0c:f4:d5:13:3c:28] with SSID[vic-unleashed-wpa2] is detected
09/20 16:36:39	AP channel change	corporate-network1	AP[R600-2F-AB@94:f6:65:18:3a:80] detects interference on radio [11g/n] and switches from channel [1] to channel [8].
09/20 16:36:39	AP channel change	corporate-network1	AP[R710-Tibet Conf@94:f6:65:14:cc:e0] detects interference on radio [11g/n] and switches from channel [1] to channel ...

Configure alerts to stay informed about ongoing events in the network

PRODUCT ORDERING INFORMATION

Model	Description
Unleashed Multi-Site Manager software	
L09-UMM1-WW00	Unleashed Multi-Site Manager software—comes with ONE Unleashed AP management license.
L09-0001-UMMO	Unleashed Multi-Site Manager Single. Unleashed AP management license SKU.